

Inspiration

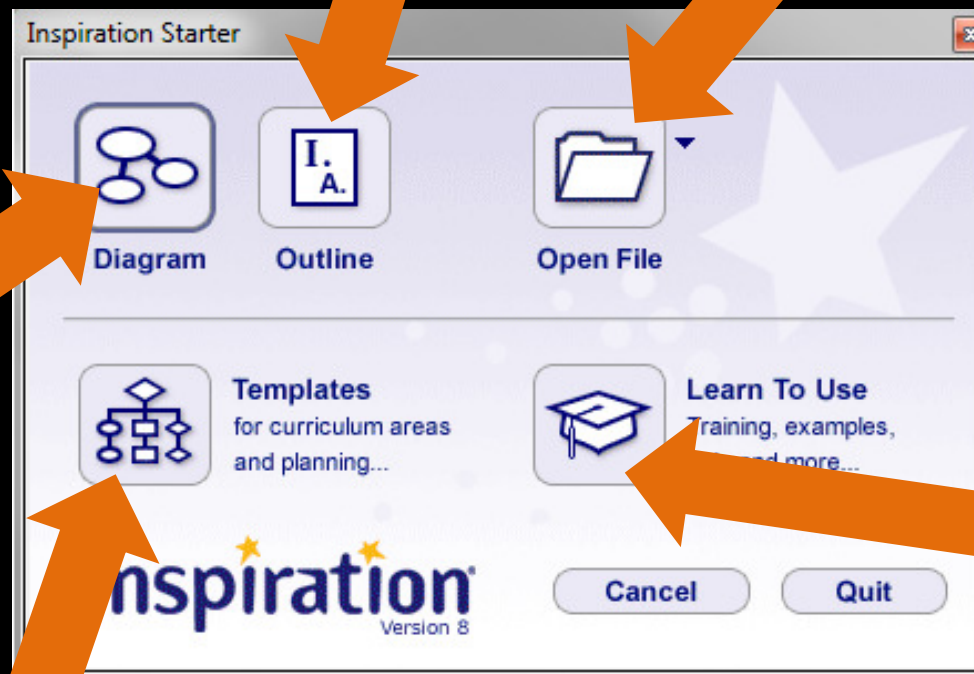
Tech Symposium 2012

STARTER SCREEN

New blank document
in Outline View

Open an already existing
Inspiration file

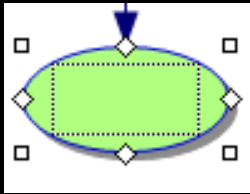
New blank
document
in Diagram
View



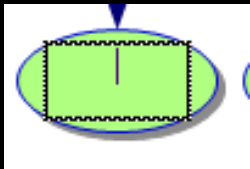
Tutorials for
learning
Inspiration

Templates for ideas and to help
get started on a Diagram

BASICS OF WORKING WITH SYMBOLS



Click once on a symbol to edit the size, color, shape, picture, etc.



Double click on a symbol to insert or edit text

MAIN TOOLBAR

Automatically
creates new
Symbols

Places a link
between Symbols

Allows you to
insert a note to go
along with a
Symbol

Allows you to look up
words, definitions and
hear pronunciation.

The words can be
entered in the
Diagram



Switches
between
Outline and
Diagram View

Creates a new
Symbol in the
direction you
choose

Arranges the
layout of
your
Diagram

Allows you to
hyperlink an
Email address,
File, Web Page
or another
Inspiration
document

Transfers
Diagram to
Microsoft
Word

SYMBOL TOOLBAR

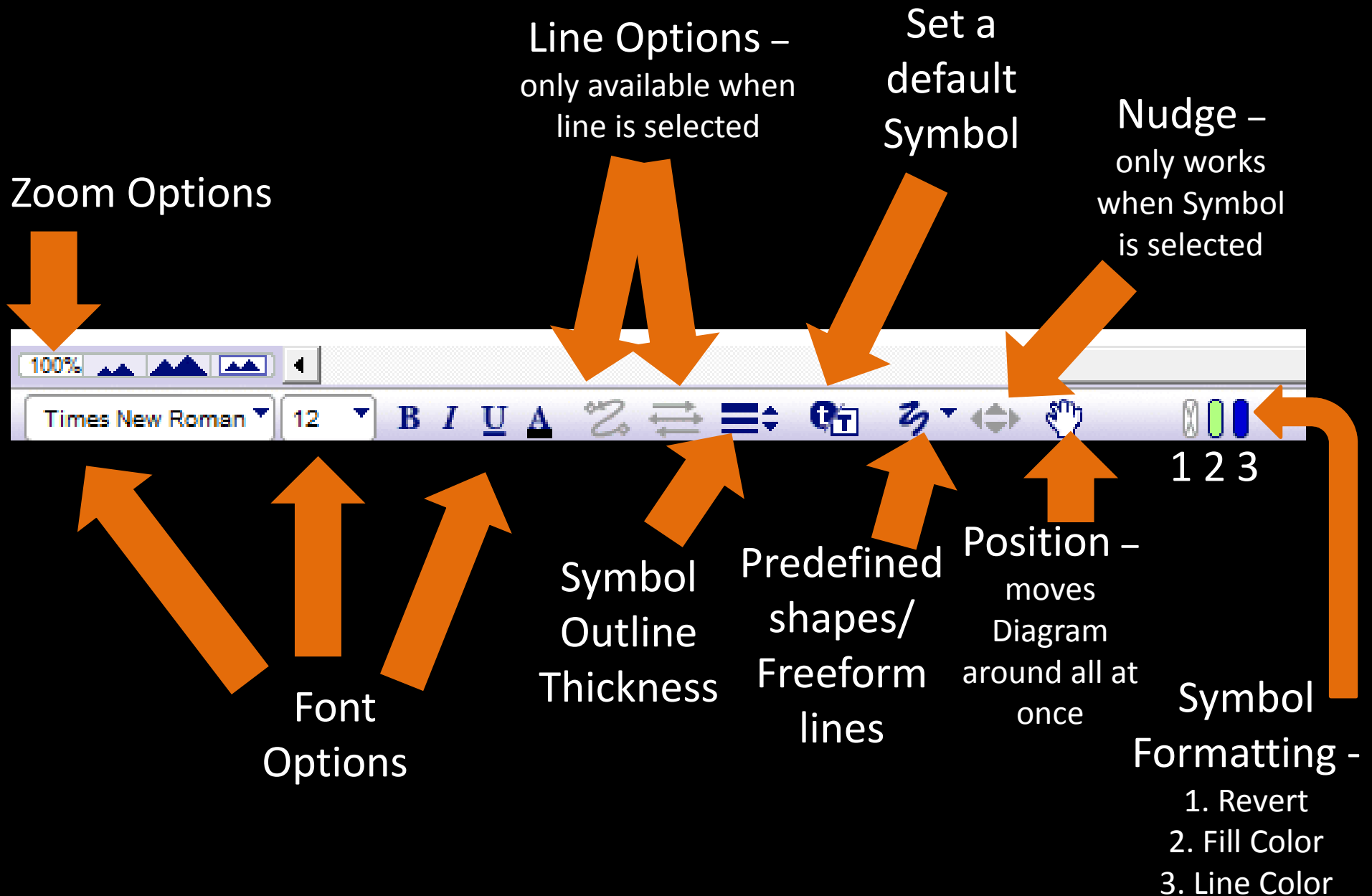


Change basic Symbol shape

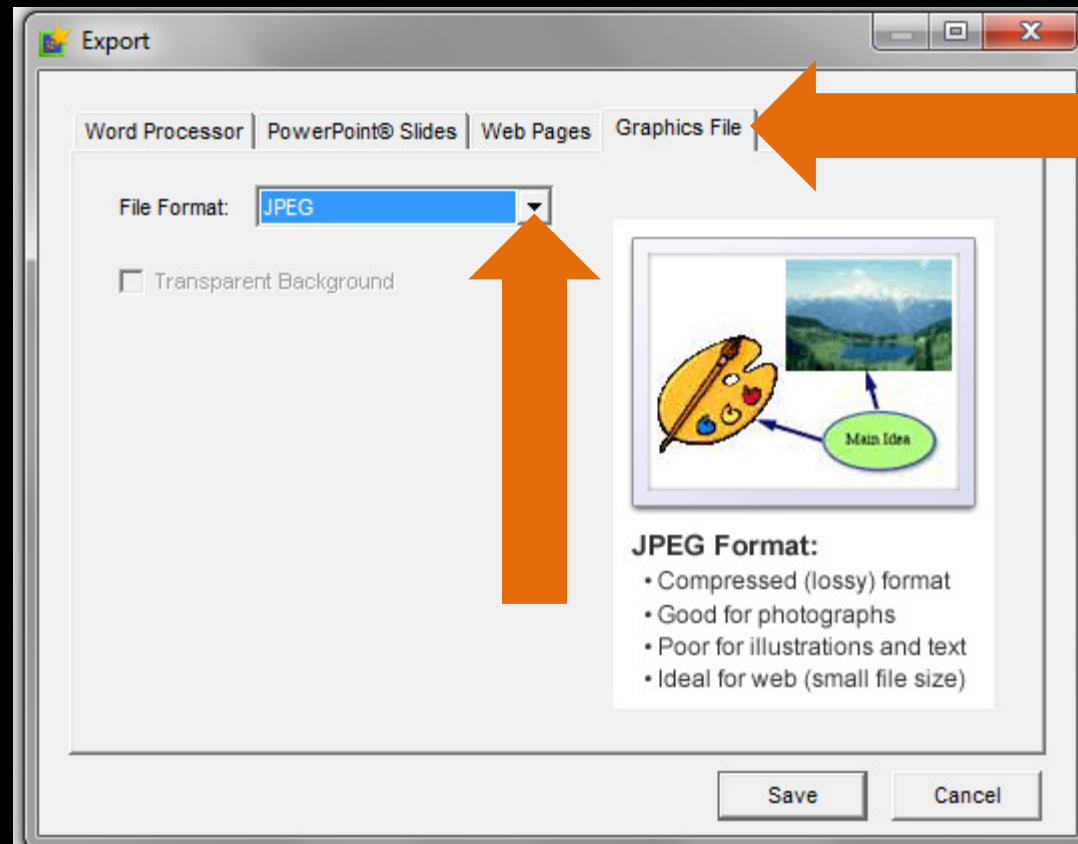
Library full of pictures and shapes to change your Symbol

Type a word in the search box and press the Enter key to narrow your choices for pictures and shapes

FORMATTING TOOLBAR



EXPORTING DIAGRAM AS A JPEG TO UPLOAD TO MOODLE



1. Click on the File menu and select Export
2. Click the Graphics File Tab
3. Under the File Format drop down list, select JPEG
4. Click the Save button to save your Diagram
5. In Moodle, click Add a resource and select Link to a file or web site and upload your file to Moodle