

Build a Food Web Activity

As you have learned, a food web is a more accurate depiction of how energy moves through a community of organisms. Food chains show only a single set of energy transfers, ignoring that many organisms obtain energy from many different sources, and in turn may provide energy to many different organisms.

In this activity, you will be building a typical food web for Pennsylvania. You have been provided with images of a number of organisms that are native to the area.

Directions:

1. Cut out the organism icons from the paper provided.
2. You must use **ALL** of the icons - no fair making some members of the community disappear. The icons are **not** drawn to scale!
3. On the paper provided, organize the icons. Establish as many energy-transfer relationships as possible. If you are not certain of an organism's trophic level or whether it might be someone else's food source, use the Internet for research.
4. Using a straight edge (ruler), draw lines showing the energy transfer relationships on your poster board. Remember: The arrowhead should point **AT** the organism that is **CONSUMING** the other organism.
5. Circle the producers.
6. Put an X on the primary consumers.
7. Put a box around the secondary consumers.
8. Put a check on the tertiary consumers.
9. Put a triangle around the quaternary consumers.
10. Color the decomposer(s) **RED**.
11. Put a **GREEN** circle around the herbivores.
12. Put a **BLUE** circle around the omnivores.
13. Put a **YELLOW** circle around the carnivores.

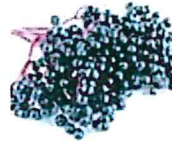
Before submitting your food web, be certain to have the names of the group members listed in the front upper-right hand corner.



Coyote



White-tail Deer



Elderberry bush



Fox



Frog



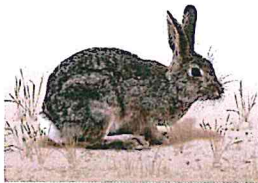
Wild grasses



Grasshopper



Hawk



Cottontail rabbit



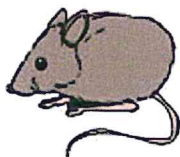
Red Newt Salamander



Meadowlark



Mosquito



Field mouse



Mushroom



Oak tree



Rattlesnake



Blue Jay



Gray Squirrel



Sunlight