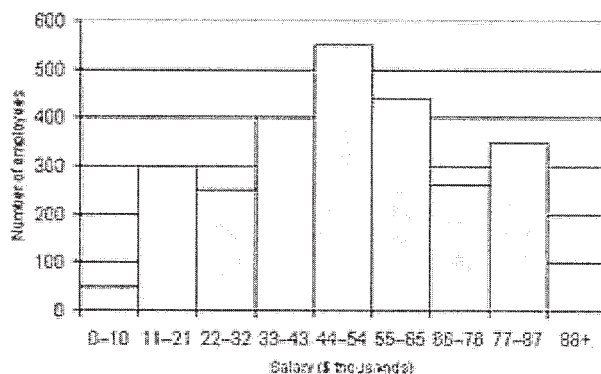


## Unit 10 Remediation Objective 11

### Interpret Histograms

Histogram- A special kind of bar graph that displays the frequency of data that has been organized into equal intervals. Because the intervals cover all possible values of data, there are no spaces between the bars of the graph.



Be able to interpret the graph and answer questions. Be sure to look at the vertical and horizontal axes, labels and intervals to find your information.

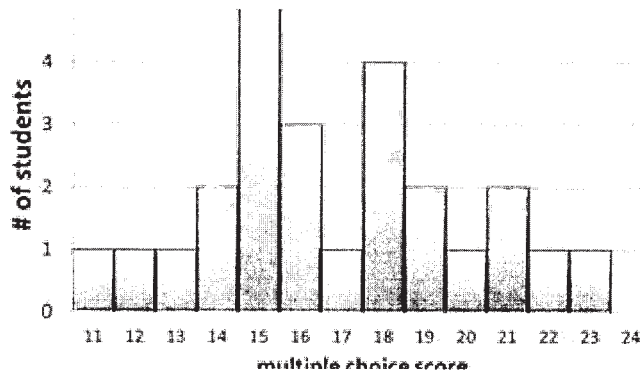
Question: What salary interval has the most number of employees?

Answer: Look at the highest bar and you will see it is **44-54**.

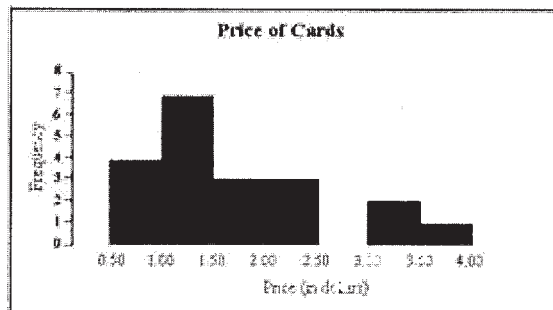
Question: About how many employees make more than \$88,000?

Answer: If you look at the right on your histogram, you will see it is about **100 employees**.

Use the histogram to answer the questions:



1. How many students scored an 18?
2. How many students scored above a 20 on the test?
3. Which score did the most number of students achieve?
4. How many students scored less than 15?



5. How many cards were bought for between \$1.00-1.50?
6. Name an interval that no cards were purchased.
7. What interval had one card purchased?
8. How many cards were purchased between \$1.00-2.50?
9. How many total cards were purchased?