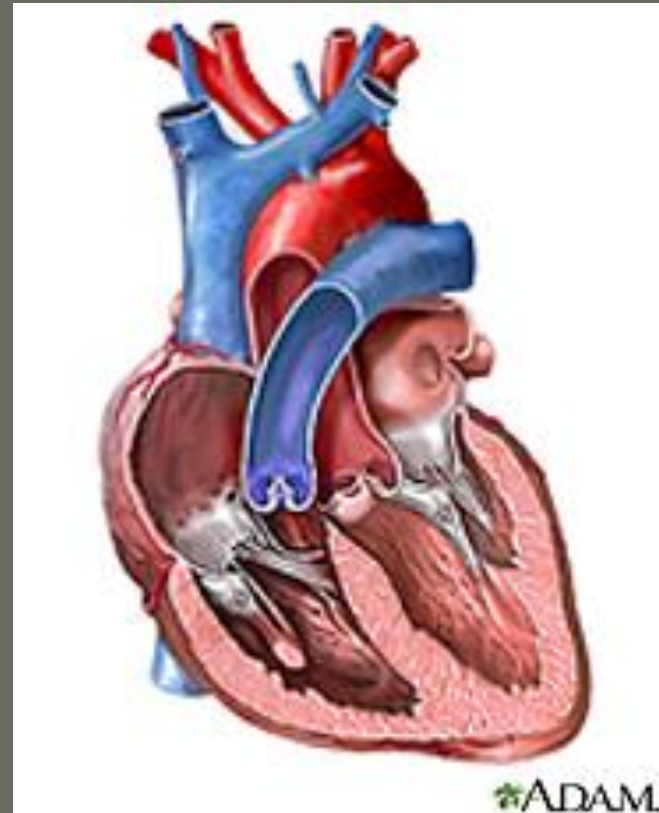


Cells CDT Questions

Which level of organization **best** classifies a heart?

- A. cell
- B. organ
- C. tissue
- D. organ system
- **Answer: B**

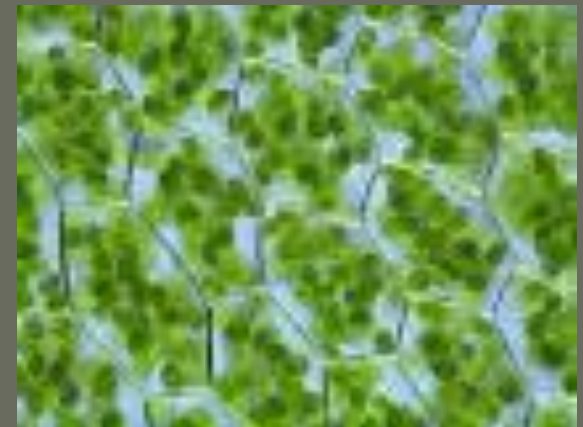


Click on Video Review

- Levels of Organization

Which of the following **best** describes one function of chloroplasts in a plant cell?

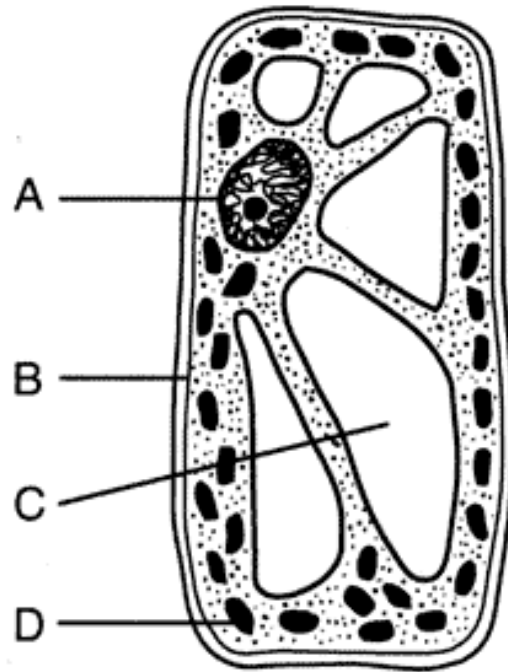
- **A. storage of wastes**
- **B. capture of solar energy**
- **C. regulation of water transport**
- **D. release of energy from carbohydrates**
- **Answer: B**



Click on Video Review

- [Chloroplast](#)

Which letter indicates a cell structure that directly controls the movement of molecules into and out of the cell?



(1) *A*
(2) *B*

(3) *C*
(4) *D*

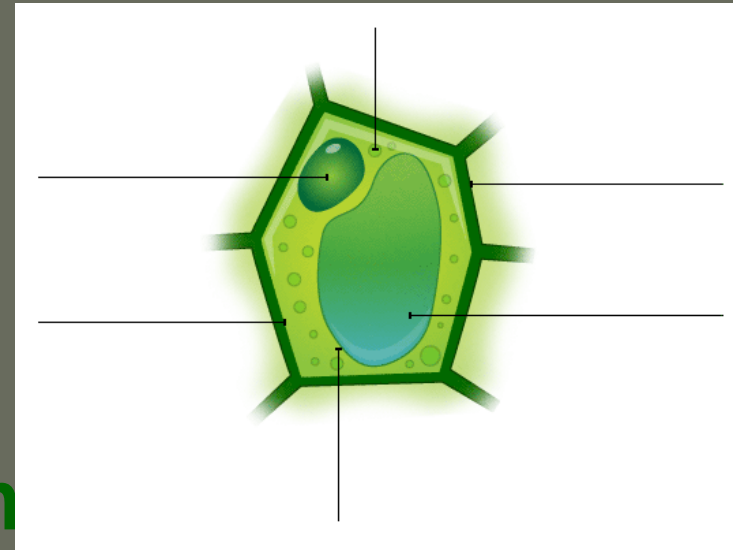
• Answer: **B**

Click on Video Review

- [Cell Membrane](#)

Proteins are very important in the structure and function of living things and are synthesized within the cell. Which cell structure is responsible for reading the DNA instructions in the cytoplasm and assembling the proteins?

- **A. nucleus**
- **B. ribosome**
- **C. Golgi apparatus**
- **D. endoplasmic reticulum**
- **Answer: B**



Click on Video Review

- [Ribosomes](#)

How does the Golgi apparatus prepare proteins for use by an organism?

- **A. It sorts proteins and sends them to their appropriate destination in a cell**
- **B. It folds, processes, assembles, and stores proteins for future cell needs**
- **C. It translates the genetic code into the amino acids that form the proteins**
- **D. It sequences nucleotides to form RNA codons that instruct protein formation**
- **Answer: B**

Click on Video Review

- [Golgi Apparatus](#)